



InterAmerican Development Bank (IDB) Decision Support Platform for Environmental Impact Assessment of Development Projects

Denny Grossman, Conservation Biology Institute

Heidi Hausman, IDB, VPS-ESG

IAIA Washington DC Chapter Meeting

October 17, 2012



IIRSA

IIRSA Project Portfolio

Projects by Country

Projects by Hub

Projects by Sector

Implementation Agenda Based
Consensus

Project Data Base

Projects

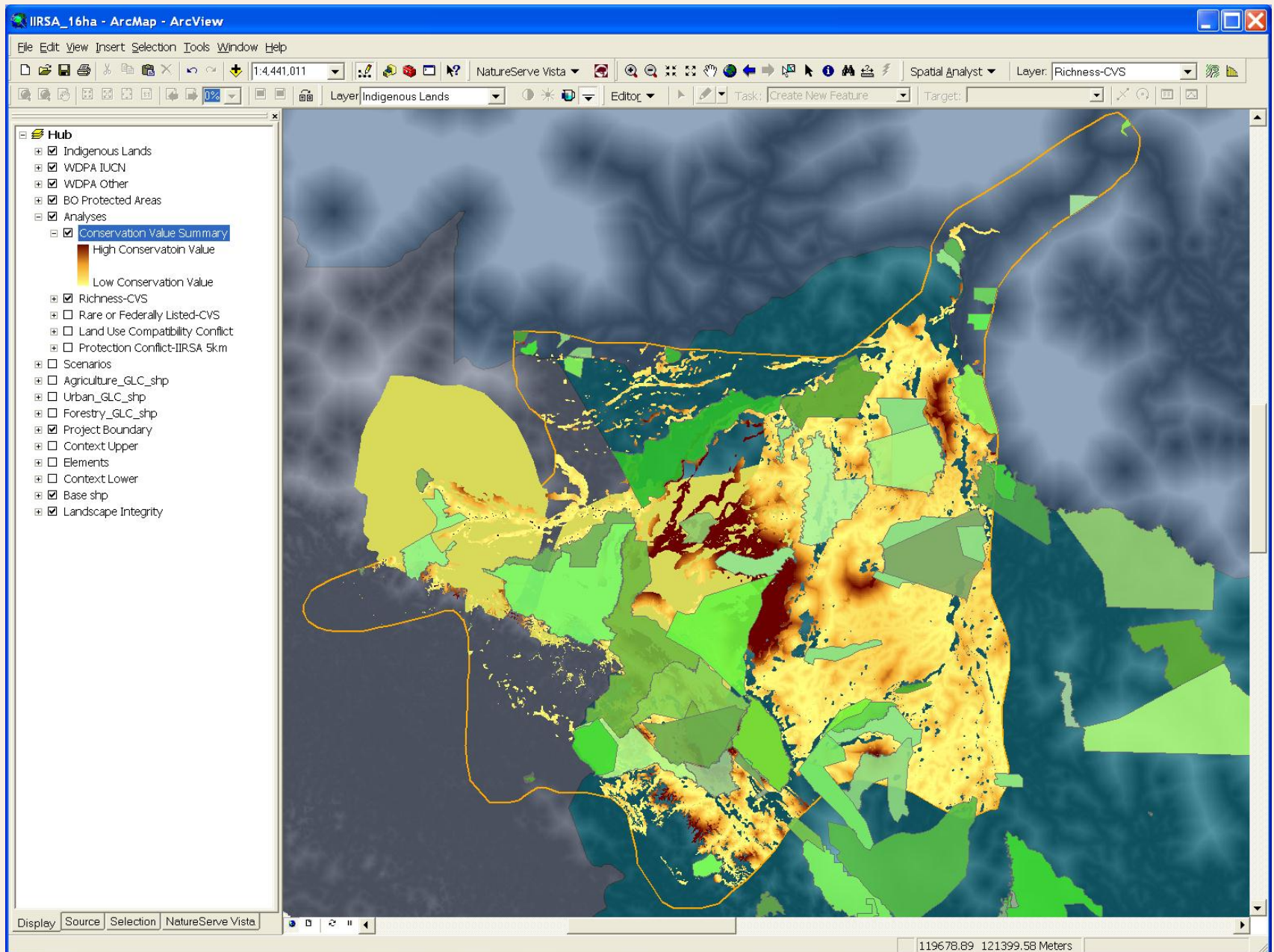
IIRSA - IMPLEMENTATION AGENDA BASED ON CONSENSUS 2005-2010



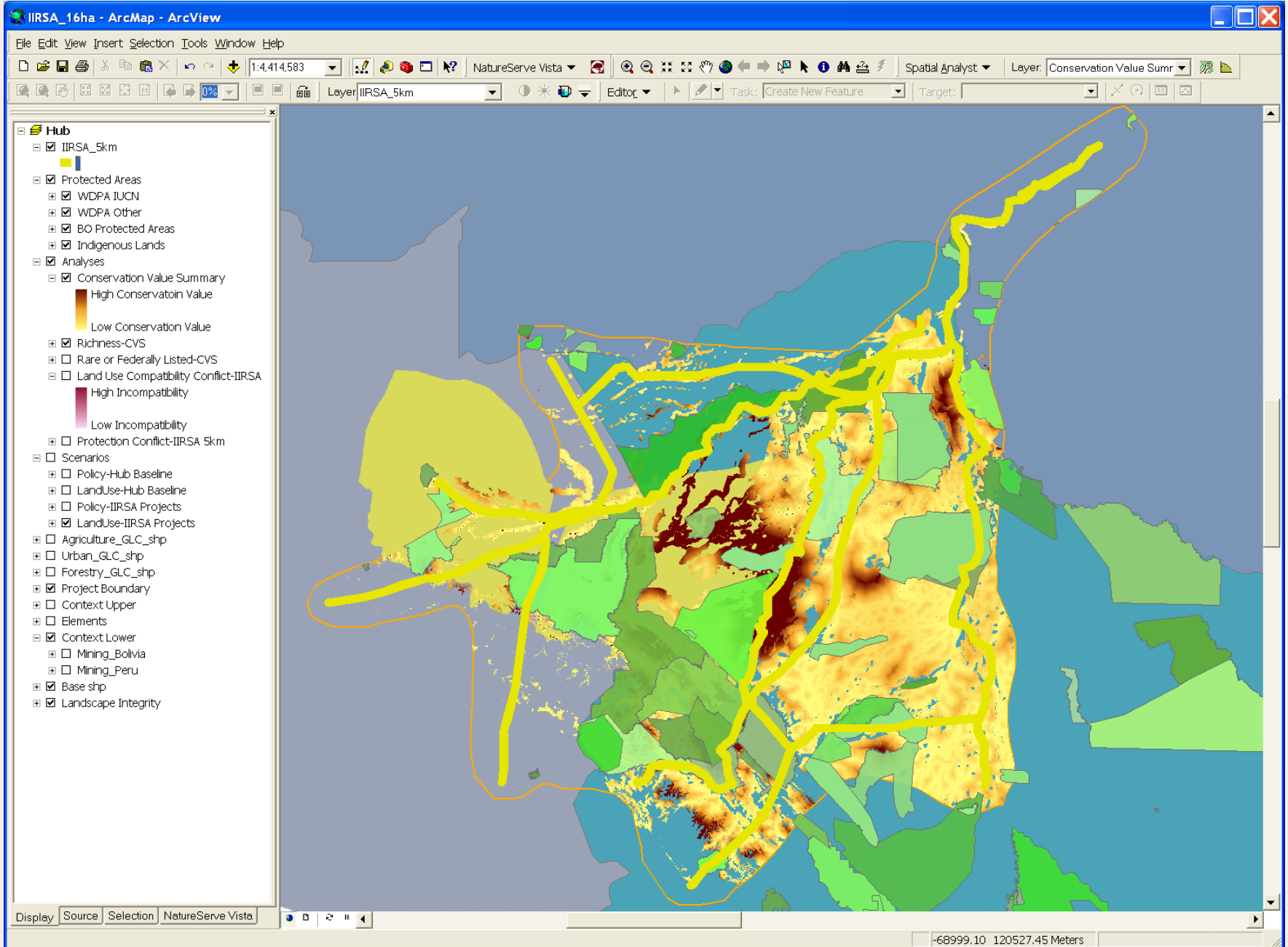
See enlarged map (1 Mb)



Current Protection of High Value Areas



Proposed Corridor Activities



NGO Working Group for Infrastructure




- Provide guidance on status of environmental / conservation methods, data, tools and services
- Integrate Latin America and Caribbean conservation information
- Create decision support tools for IDB



IDB Environmental Safeguard Policy

Section B.9

The Bank will not support operations that, in its opinion, significantly convert or degrade critical natural habitats or natural habitats



IDB Environmental Safeguards

Section B9

Critical Natural Habitat definition:

- Existing and proposed protected areas
- Unprotected areas of known high conservation value that are:
 - Highly suitable for biodiversity conservation
 - Crucial for critically endangered, endangered, vulnerable or near threatened species
 - Critical for the viability of migratory species.



IDB Environmental Safeguards

Section B9

Natural Habitat definition:

- Biological communities
 - that are still dominated by native plant and animal species;
 - where human activity has not essentially modified the area's primary ecological functions
- Sites that provide critical ecological services required for sustainable human development
- Sites that are vital to ensure the functional integrity of ecosystems (e.g., biological corridors, natural springs);
- Sites that contain high levels of endemism



Data

Standardization and Integration

Data: Protected Areas

DATA  BASIN

Explore • Create • Share • Learn

HOME | ABOUT | BLOG | HELP | DONATE | LANGUAGE: English | LOG OUT



Search Data Basin

My Workspace

Datasets

Maps

Galleries

People

Groups

Admin

Welcome Dennis Grossman

New Map

1 dataset

Tasks View Help



Identify Select

Full Screen



Map showing South America (Brazil, Peru, Argentina) and surrounding oceans. The map displays various datasets, including protected areas and natural habitats, overlaid on a base map.

Base Maps

**World Terrain**
Source: ArcGIS Online
☒ Boundaries & labels
☒ Base map

**World Topography**
Source: ArcGIS Online

**World Streets**
Source: ArcGIS Online

**World Imagery**
Source: ArcGIS Online
☐ Boundaries & labels
☐ Base map

Datasets

 add datasets

☒ IDB Policy Analysis Layers

☒ Critical Natural Habitats

☐ Species

☒ AZE - points (0.5 km buffer)

☒ KBA: Congregations -points (0.5 km buffer)

☒ KBA: Congregations

☒ KBA: Threatened Species - points (0.5 km buffer)

☒ KBA: Threatened Species

☒ Protected Areas

☐ Terrestrial Ecosystems

☐ Natural Habitats

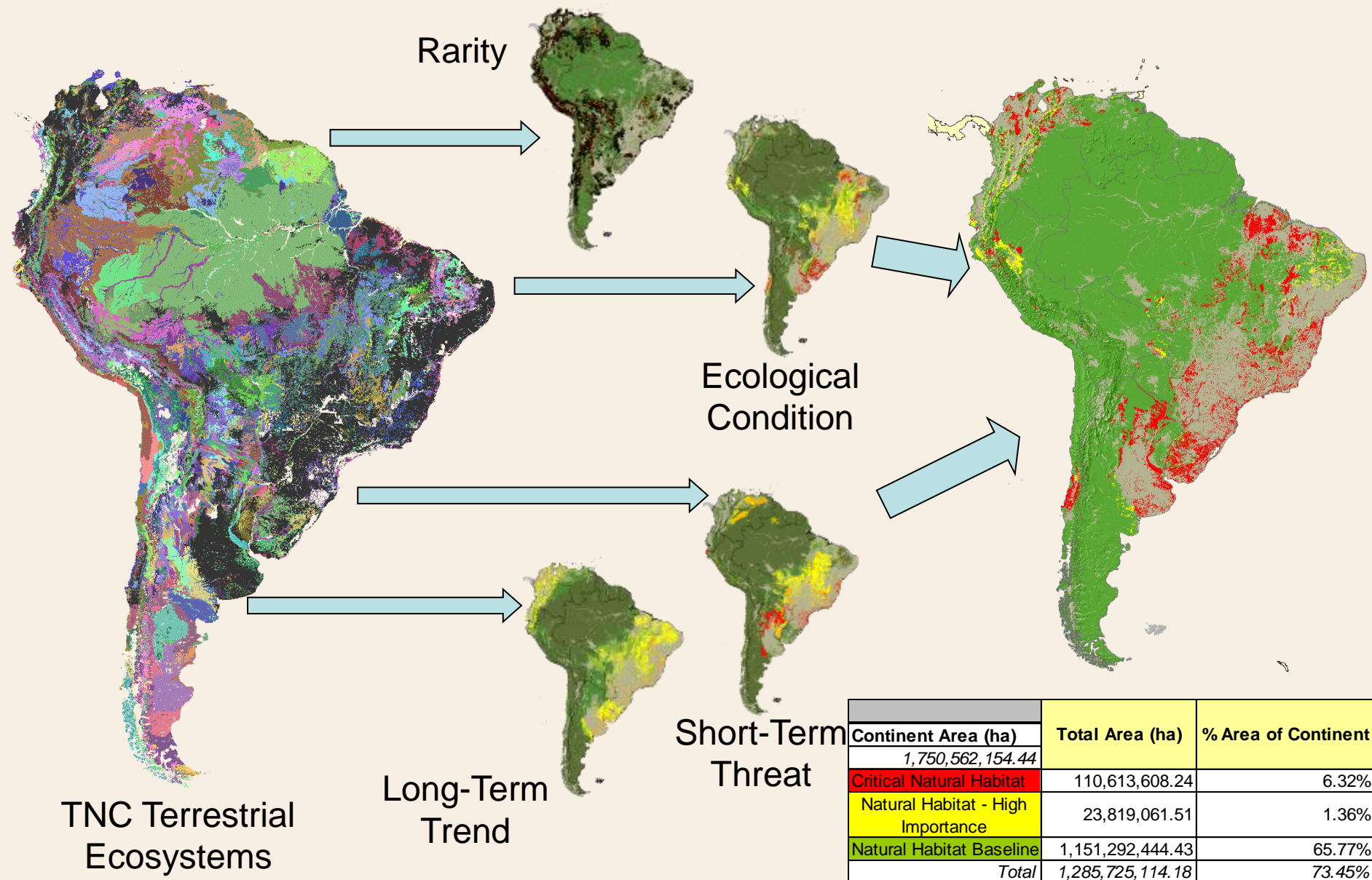
0 1540 km (960 miles)

LONG: -6.09 | LAT: -55.43

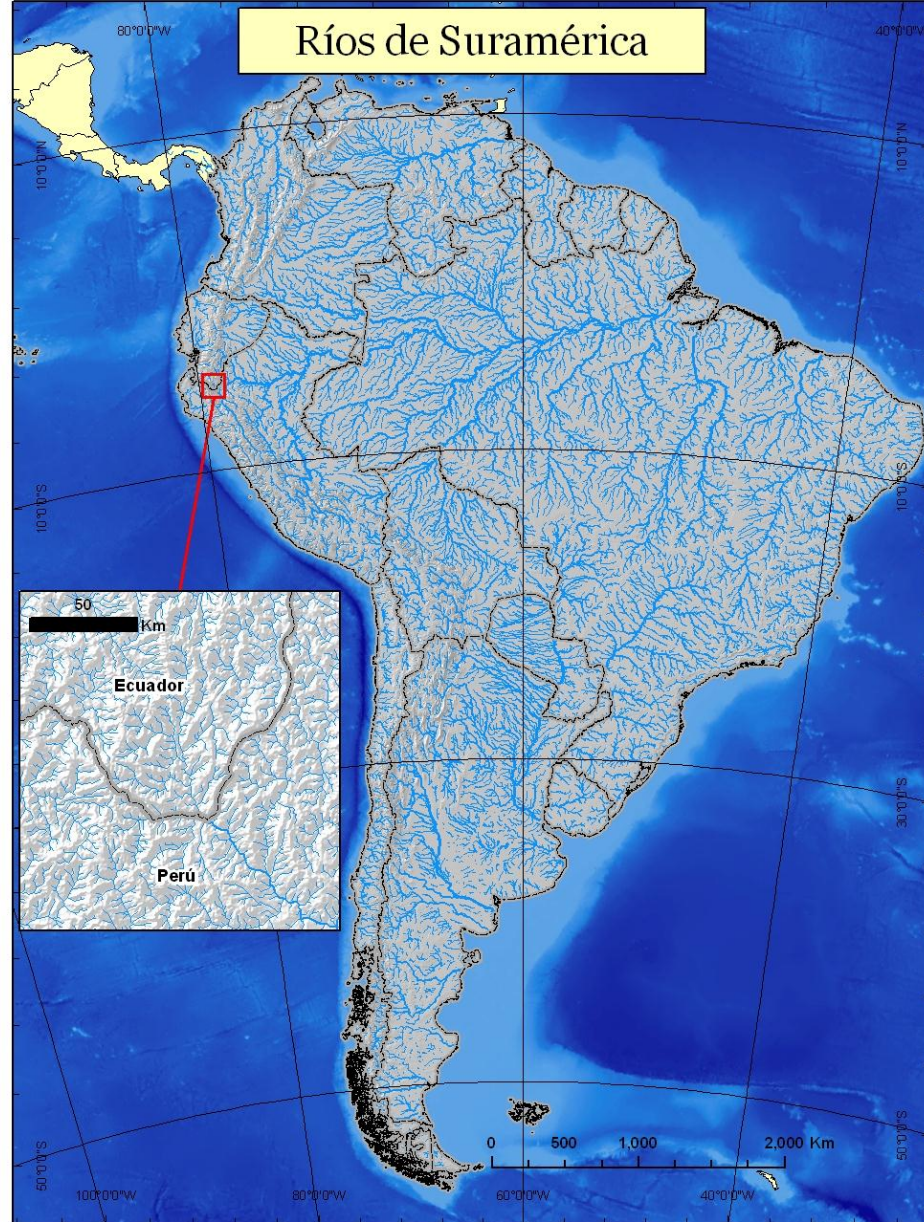
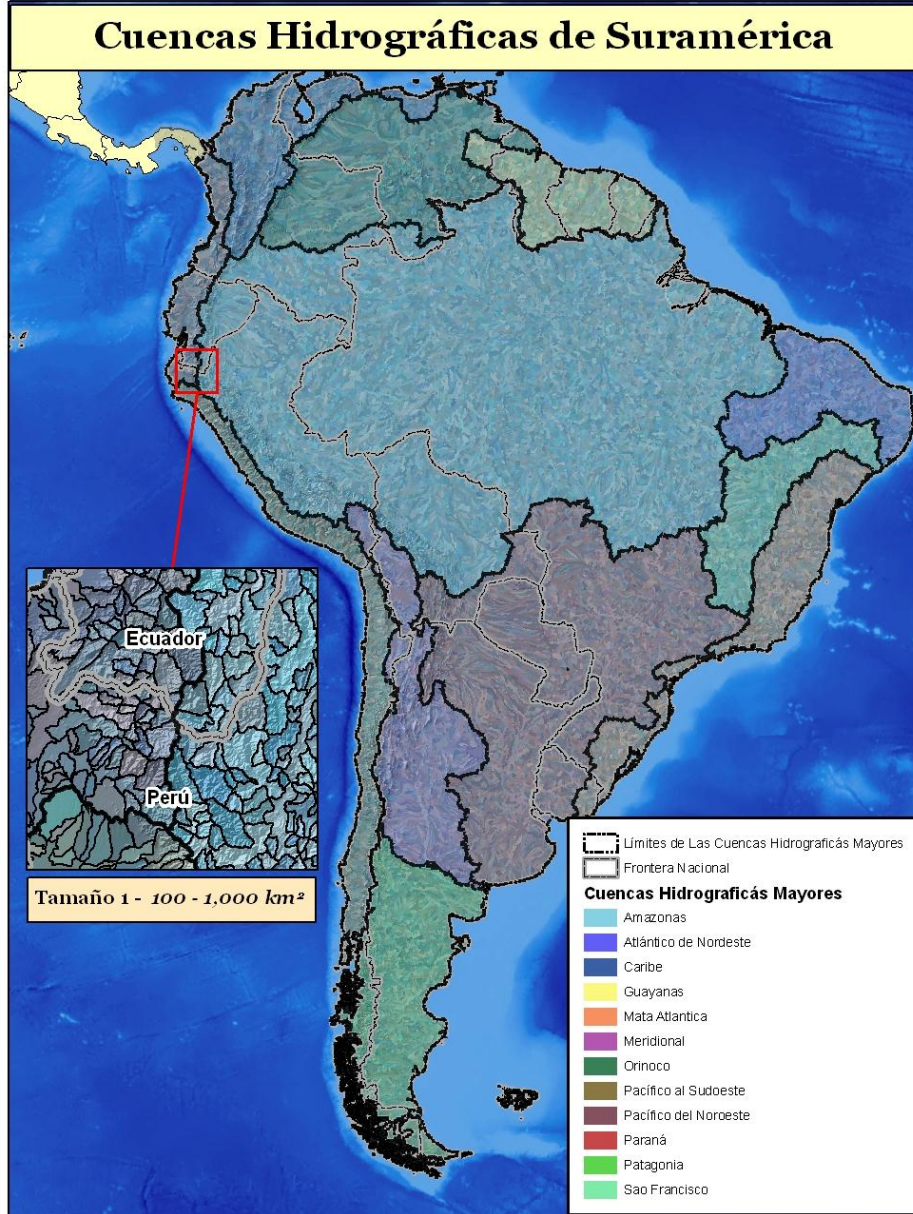
HOME | ABOUT | BLOG | HELP | TERMS OF USE | CONTACT US

Report a Problem

Data: Terrestrial Ecosystems



Data: Freshwater Ecosystems



Data: Species – IBAs, KBAs, AZEs

DATA  BASIN

Explore • Create • Share • Learn

HOME | ABOUT | BLOG | HELP | DONATE | LANGUAGE: English | LOG OUT

Search Data Basin

My Workspace

Datasets

Maps

Galleries

People

Groups

Admin

Welcome Dennis Grossman

New Map

1 dataset

Tasks

View

Help



Base Maps

**World Terrain**
Source: ArcGIS Online
☒ Boundaries & labels
☒ Base map

**World Topography**
Source: ArcGIS Online

**World Streets**
Source: ArcGIS Online

**World Imagery**
Source: ArcGIS Online
☒ Boundaries & labels
☒ Base map

Datasets

add datasets

☒ IDB Policy Analysis Layers

☒ Critical Natural Habitats

☒ Species

☒ AZE - points (0.5 km buffer)

☒ KBA: Congregations -points (0.5 km buffer)

☒ KBA: Congregations

☒ KBA: Threatened Species - points (0.5 km buffer)

☒ KBA: Threatened Species

☐ Protected Areas

☐ Terrestrial Ecosystems

☒ Natural Habitats

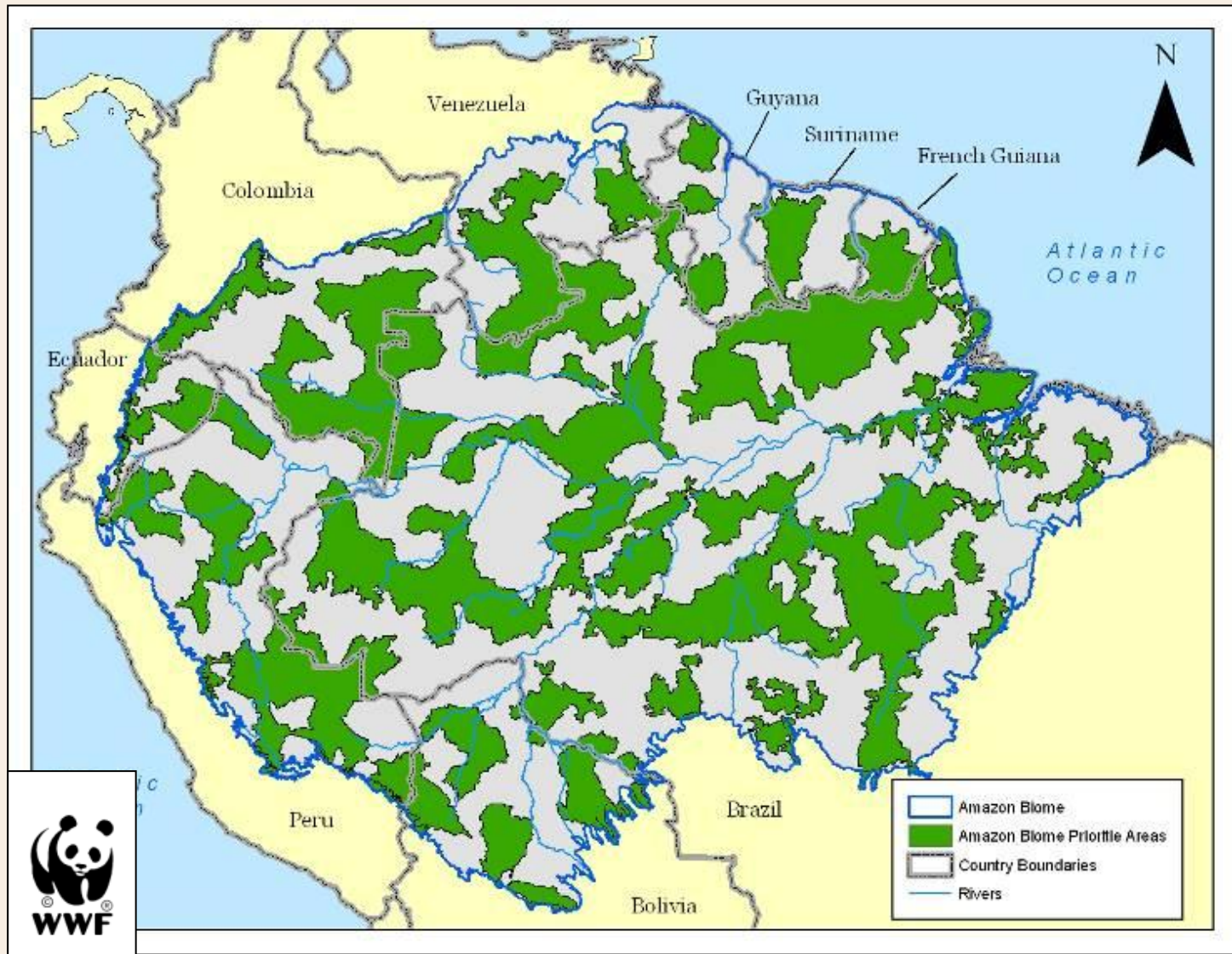
☒ Species

☐ Terrestrial Ecosystems

HOME | ABOUT | BLOG | HELP | TERMS OF USE | CONTACT US

Report a Problem

Data: Recognized Conservation Priority Sites



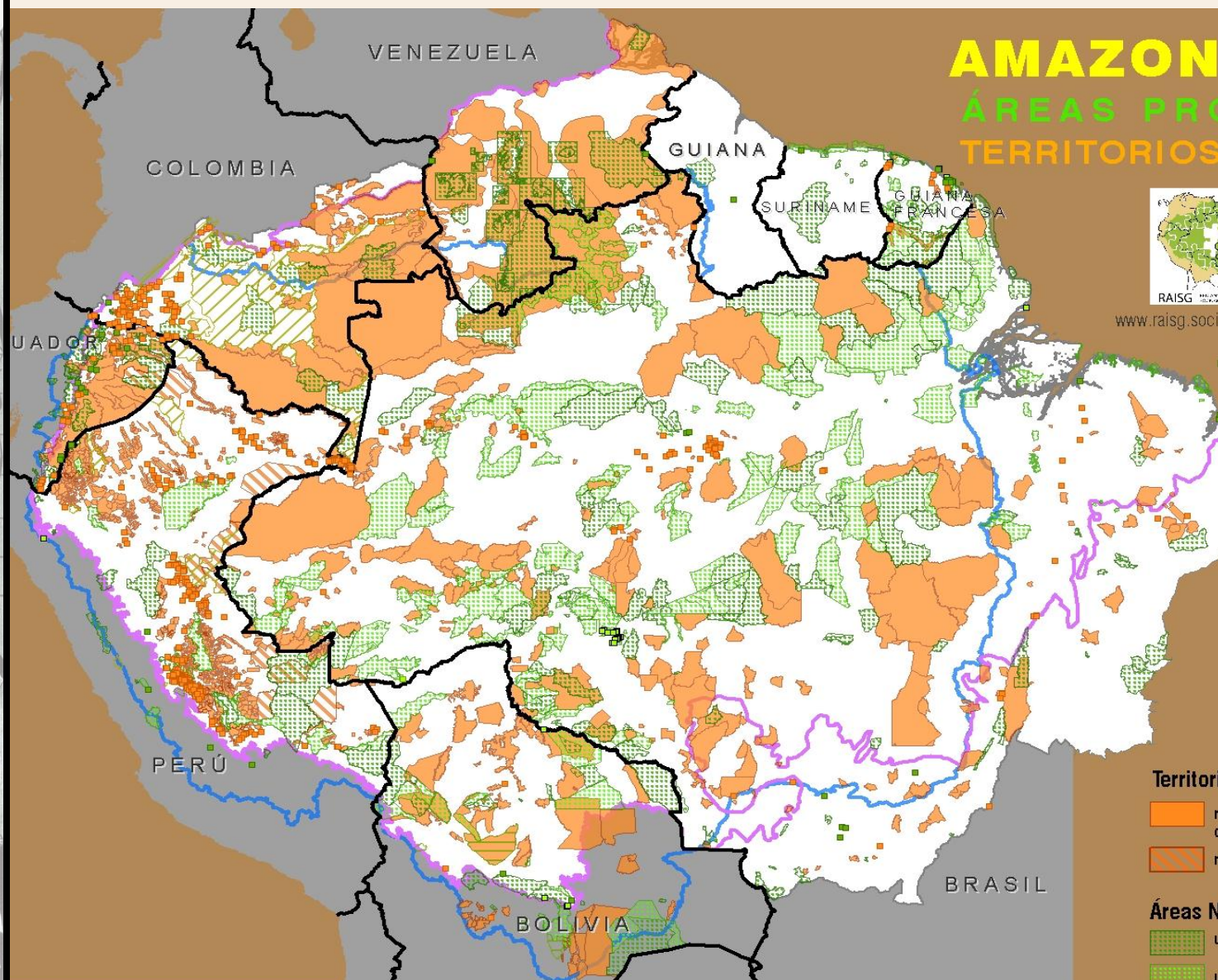
WWF Amazon Priority Sites

Data: Indigenous Lands of the Amazon Basin

AMAZONIA 2009

ÁREAS PROTEGIDAS

TERRITORIOS INDÍGENAS



www.raisg.socioambiental.org

Amazonia

- Político
- Cuenca *Bacia*
- Biogeográfico

Territorios Indígenas

- reconocidos oficialmente o en proceso de reconocimiento
- reserva territorial o zona intangible

Áreas Naturales Protegidas

- uso indirecto
- uso directo
- uso directo/indirecto
- categorías transitorias

Amazónica de Información Socioambiental Georreferenciada



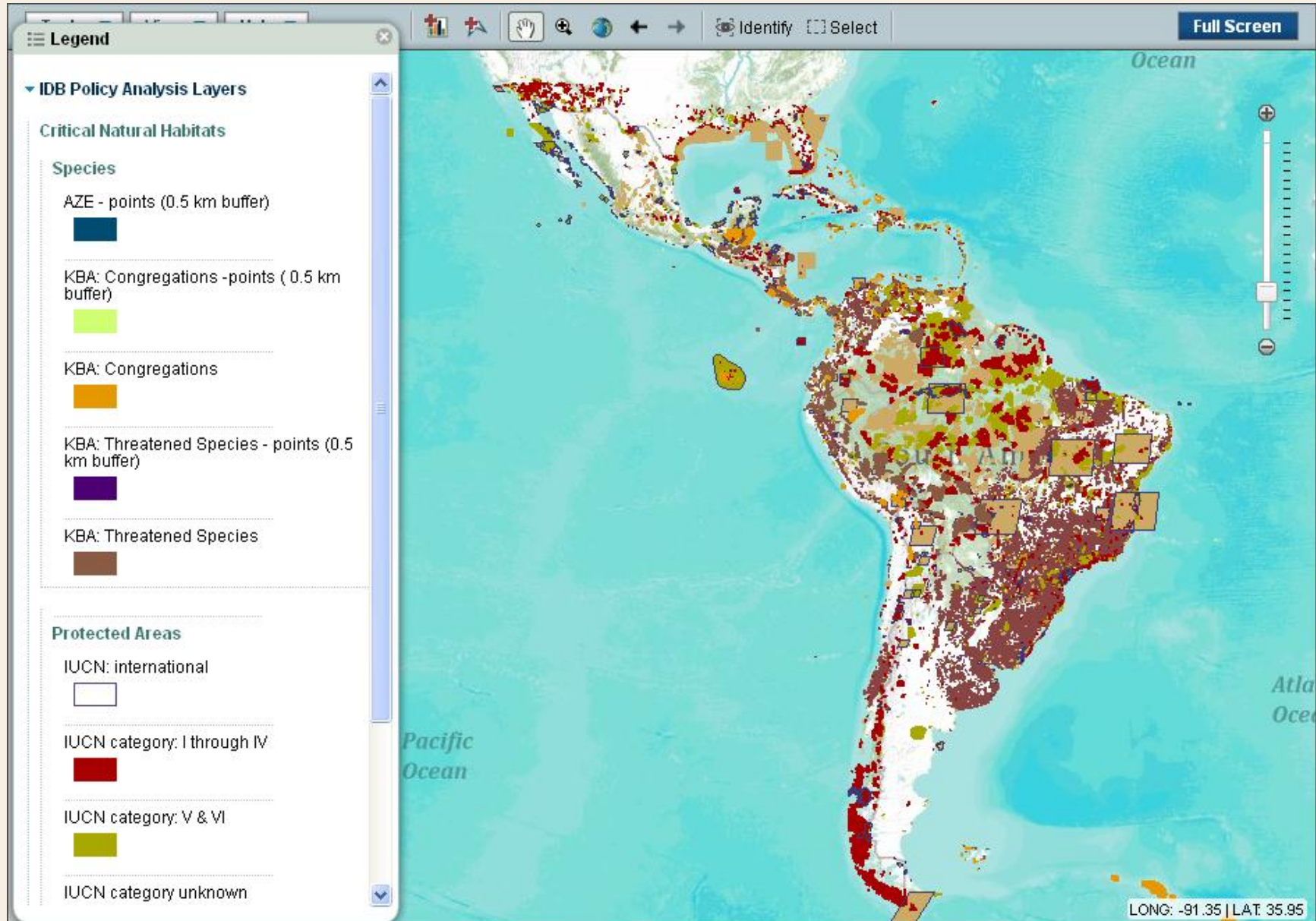
apoyo a RAISG:



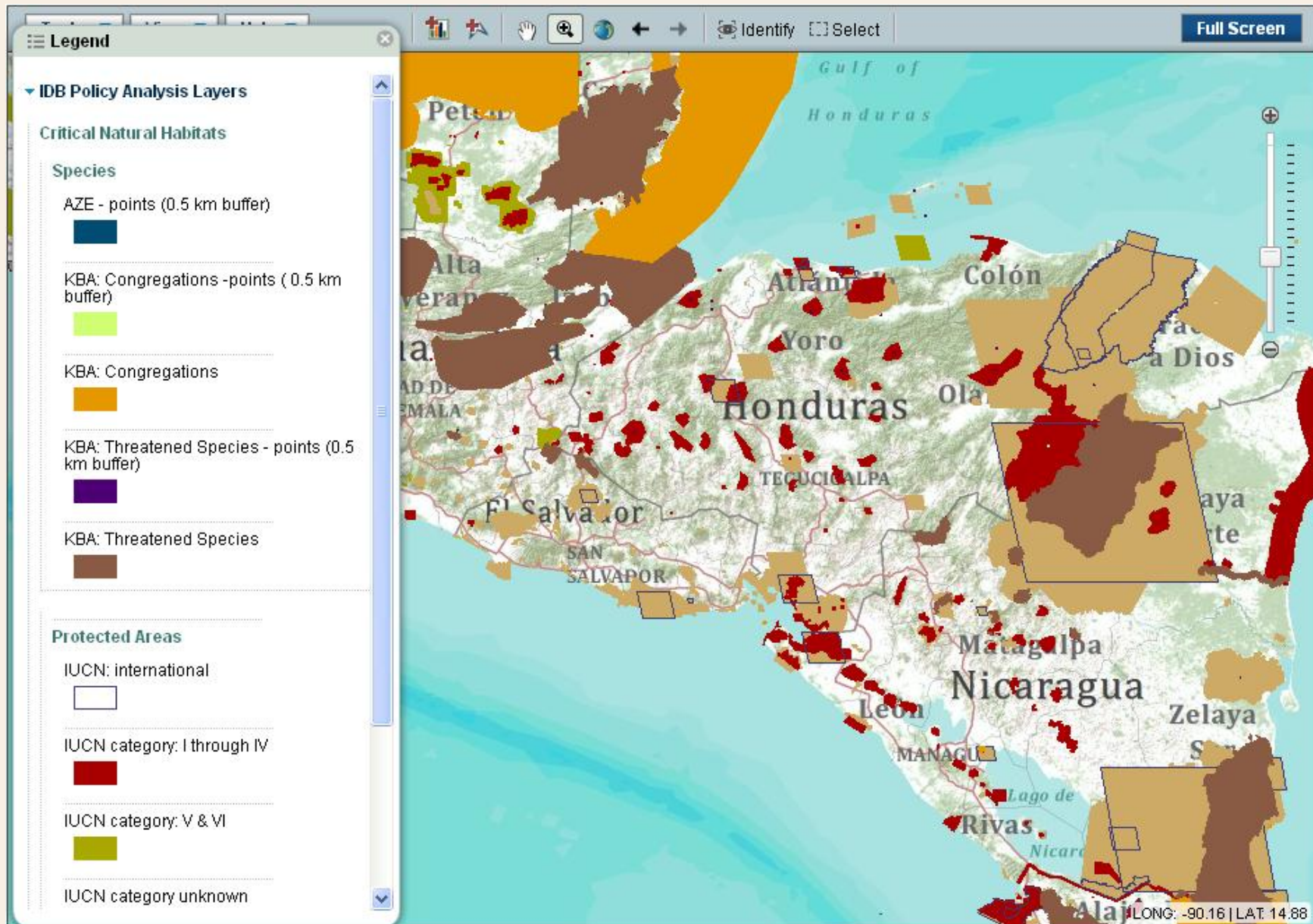
First Integrated Spatial Presentation of CNH and NH:

A Critical Advance for Impact Analysis

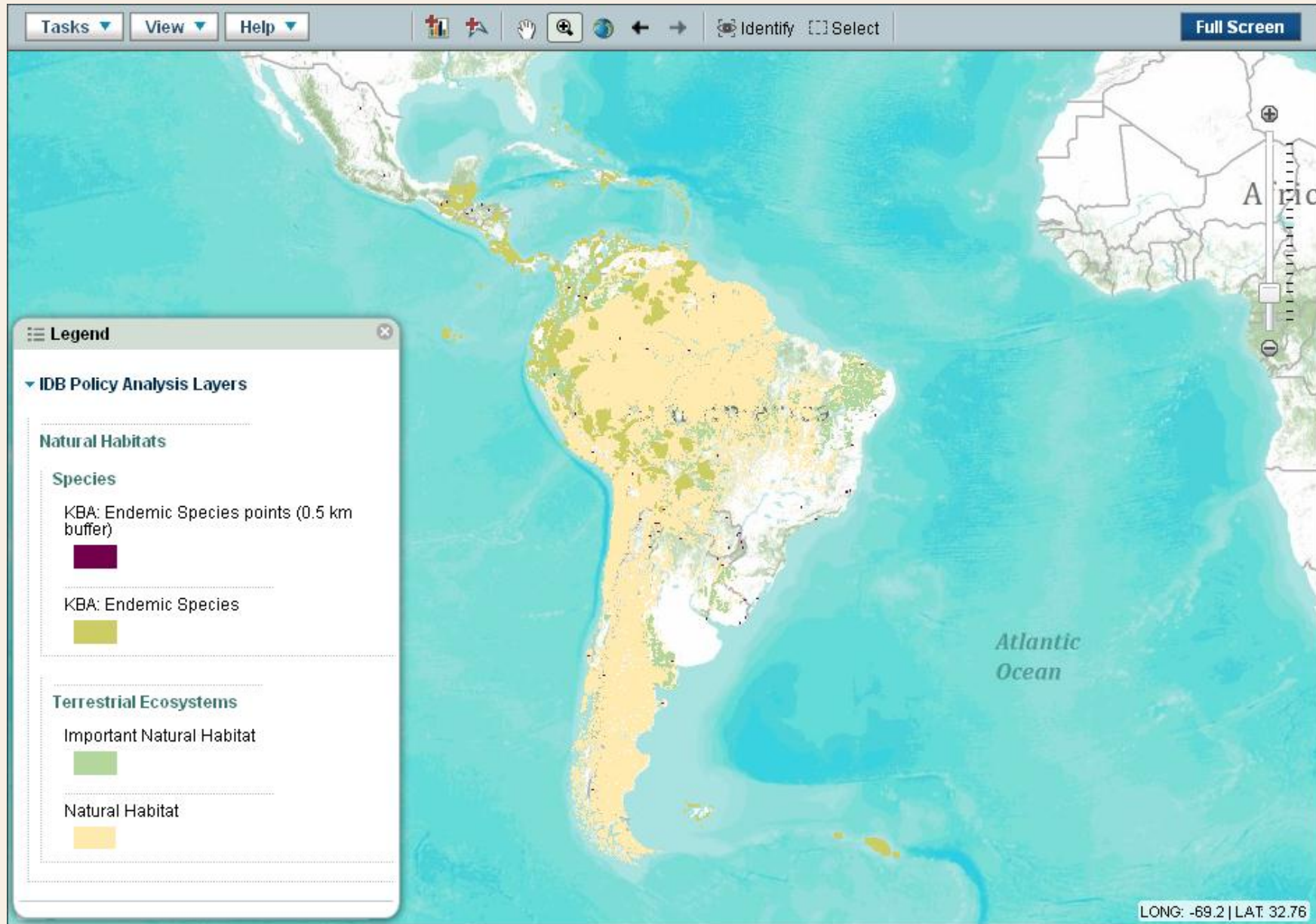
Critical Natural Habitat



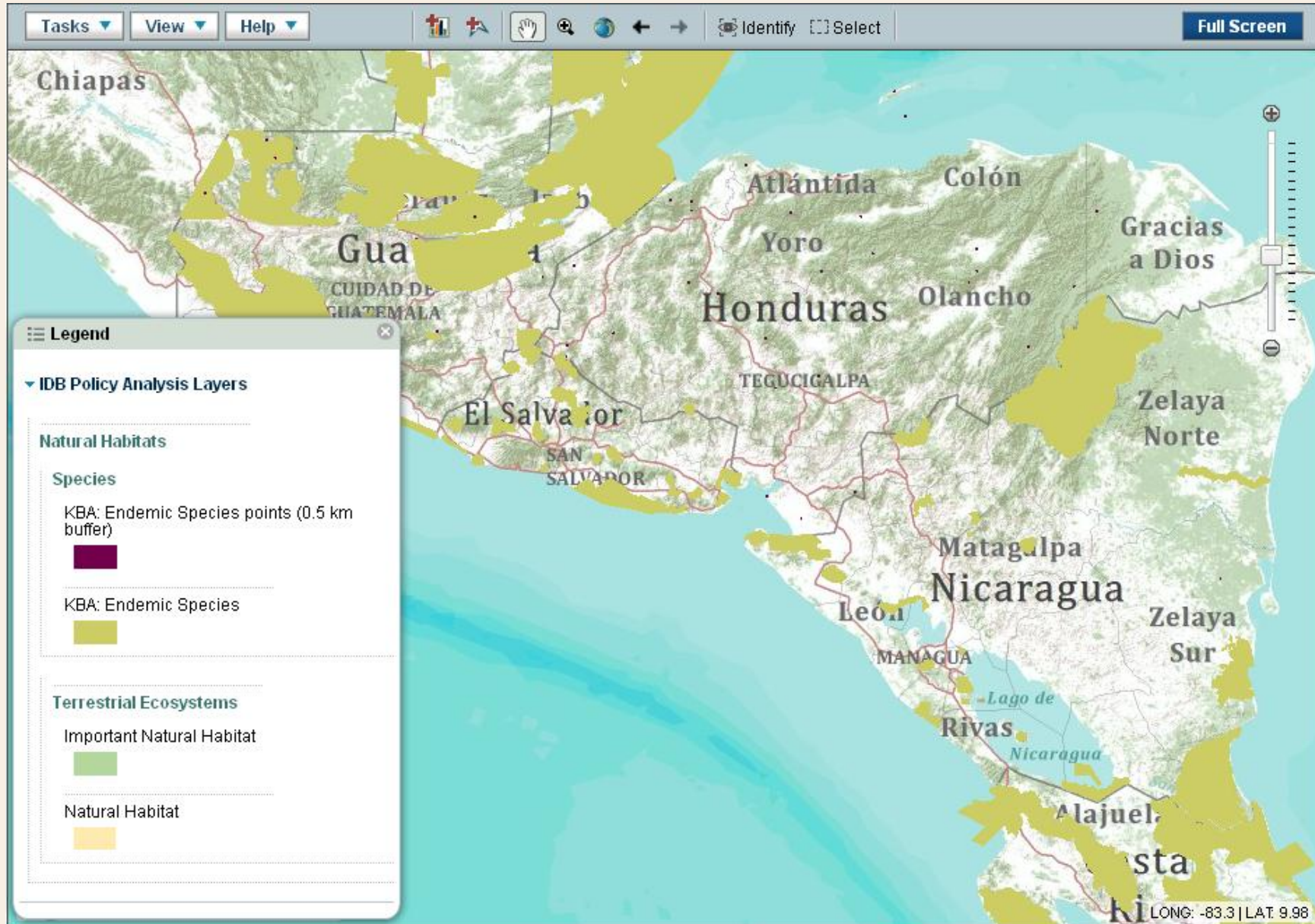
Critical Natural Habitat



Natural Habitat



Natural Habitat





www.databasin.org

Providing Access to Spatial Data, Tools,
People, and Solutions



My Workspace

Datasets

Maps

Projects

People

Groups

Centers

Welcome Dennis Grossman

[Contribute a Dataset](#)

[Create a Map](#)

[Create a Project](#)

IDB - Environmental Safeguards Group

[Group Home](#)

[Group Profile](#)

[Group Bookmarks](#)

[Group Projects](#)

[Group Members](#)

Data Basin | Groups | IDB - Environmental Safeguards Group | Home

IDB - Environmental Safeguards Group

[Edit Group Home](#)

[Edit Profile](#)

[View Public Profile](#)

[► How Do I...](#)



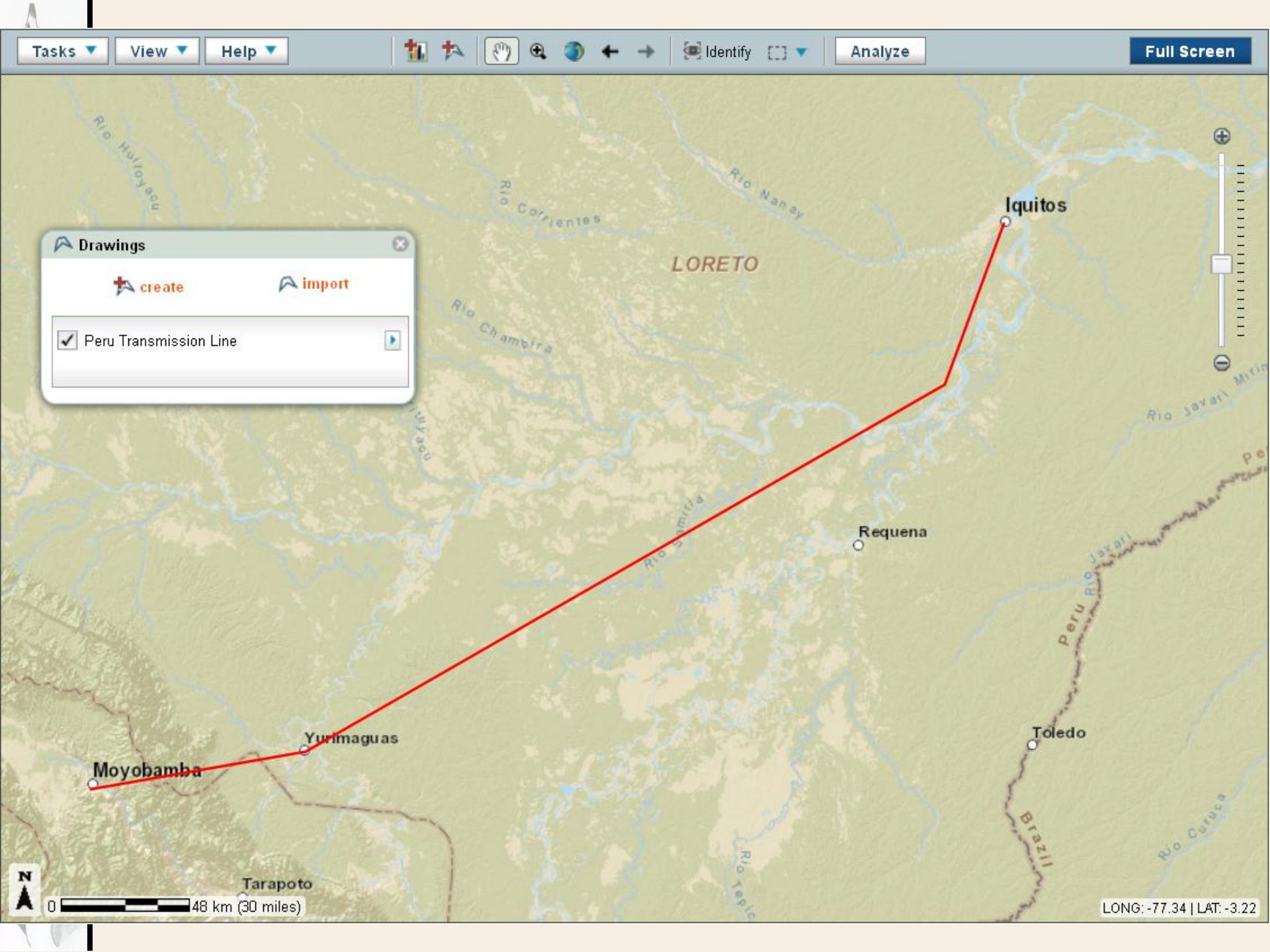


IDB – DSS


**Example of
Project Environmental
Assessment and Reporting**

Línea de Transmisión 220 kV Moyobamba-Iquitos y Subestaciones Asociadas



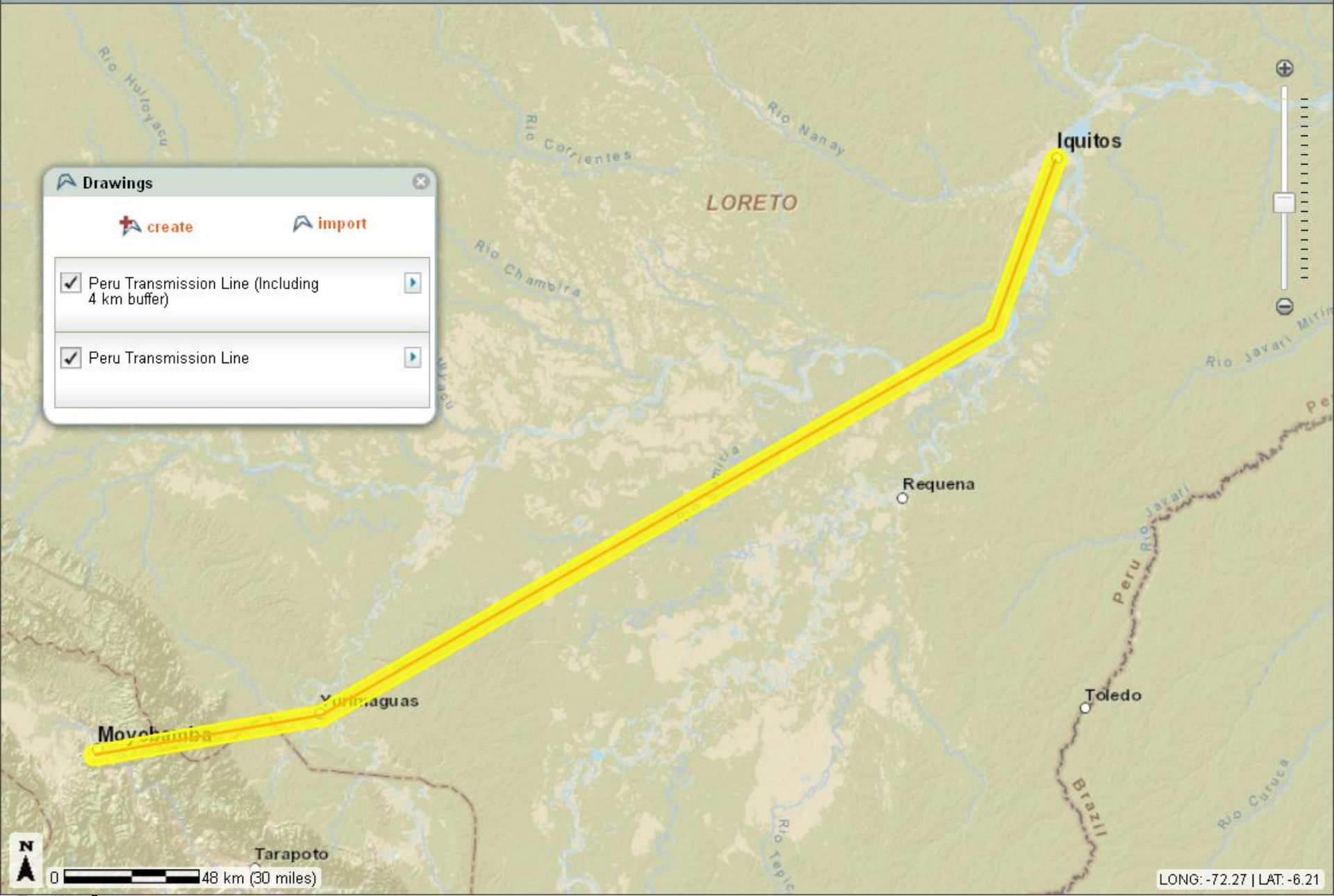


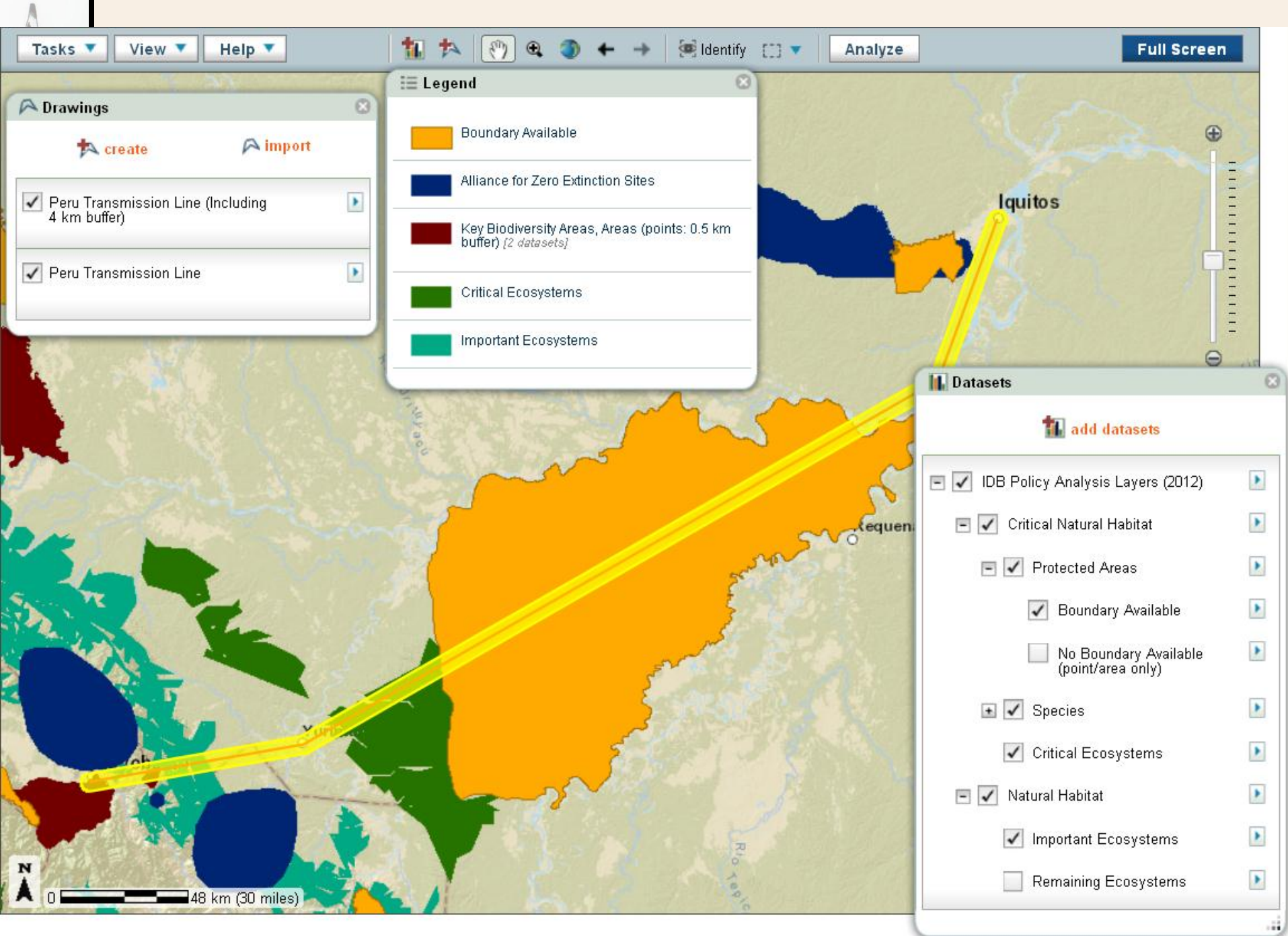
Drawings

 create  import

☒ Peru Transmission Line (Including 4 km buffer)

☒ Peru Transmission Line





Drawings

create import

- ☒ Peru Transmission 4 km buffer)
- ☒ Peru Transmission

Analysis results

Generate Report Generate CSV

Units: Kilometers / Hectares ▾

Name	# of Features	Intersection Area/Length	Total Area/Length of Intersected Features
IDB Policy Analysis Layers (2012) - 2 Color View : Critical Natural Habitat	11	927,166 ha	12,037,544 ha
Species	5	182,206 ha	3,013,330 ha
Alliance for Zero Extinction Sites	1	2.84 ha	375,055 ha
Key Biodiversity Areas	4	182,203 ha	2,638,275 ha
Key Biodiversity Areas (points: 0.5 km buffer)	0	—	—
Protected Areas	4	691,812 ha	8,666,903 ha
Boundary Available	2	345,906 ha	4,333,452 ha
No Boundary Available (point/area only)	2	345,906 ha	4,333,452 ha
Critical Ecosystems	2	53,148 ha	357,311 ha
IDB Policy Analysis Layers (2012) - 2 Color View : Natural Habitat	144	255,273 ha	2,756,178 ha
Important Ecosystems	1	18,301 ha	1,323,863 ha
Remaining Ecosystems	143	236,973 ha	1,432,315 ha

Analysis Area: 407,934 ha

Legend

Boundary Available

Alliance for Zero Extinction Sites

Key Biodiversity Areas, Areas (points: 0.5 km buffer) [2 datasets]

Critical Ecosystems

Important Ecosystems

Project Name: Moyobamba - Iquitos Transmission line

Project Number: 1

Description:

Proposed Transmission Line from Moyobamba to Iquitos in Peru

Date of Intersection Analysis: May 14, 2012

Analyst: Dennis Grossman

Project Intersection Analysis - Summary:

Probability of Significant Impact

IDB Policy Analysis Layers (2012) - 2 Color View : Critical Natural Habitat

Yes

IDB Policy Analysis Layers (2012) - 2 Color View : Natural Habitat

Yes

Map



Project Extent:

Project Area: 508 km

Buffer Size: 4 km

Total Area of Intersection

Analysis (Project and Buffer):

407,934 ha

Legend:

- Critical Natural Habitat
- Natural Habitat
- Project Area
- Buffer Area



Project Intersection Analysis - Detailed

IDB Policy Analysis Layers (2012) - 2 Color View : Critical Natural Habitat:

Name	# of Features	Intersection Area/Length	Total Area/Length of Intersected Features
<i>IDB Policy Analysis Layers (2012) - 2 Color View : Critical Natural Habitat</i>	11	927,186 ha	12,037,544 ha
Species	5	182,206 ha	3,013,330 ha
Alliance for Zero Extinction Sites	1	2.84 ha	375,055 ha
Cuenca Ro Nanay	1	2.84 ha	375,055 ha
Key Biodiversity Areas	4	182,203 ha	2,638,275 ha
Moyobamba	1	5,773 ha	91,527 ha
Jess del Monte	1	3,475 ha	4,986 ha
Cuenca Ro Nanay	1	2.84 ha	375,055 ha
Reserva Nacional Pacaya Samiria	1	172,953 ha	2,166,726 ha
Key Biodiversity Areas (points: 0.5 km buffer)	0	—	—
Protected Areas	4	691,812 ha	8,666,903 ha
Boundary Available	2	345,906 ha	4,333,452 ha
Pacaya Samiria	2	345,906 ha	4,333,452 ha
No Boundary Available (point/area only)	2	345,906 ha	4,333,452 ha
Pacaya Samiria	2	345,906 ha	4,333,452 ha
Critical Ecosystems	2	53,148 ha	357,311 ha
Bosque Siempreverde Subandino del Oeste de la Amazona	2	53,148 ha	357,311 ha

IDB Policy Analysis Layers (2012) - 2 Color View : Natural Habitat:

Name	# of Features	Intersection Area/Length	Total Area/Length of Intersected Features
<i>IDB Policy Analysis Layers (2012) - 2 Color View : Natural Habitat</i>	144	255,273 ha	2,756,178 ha
Important Ecosystems	1	18,301 ha	1,323,883 ha
Bosque Siempreverde Subandino del Oeste de la Amazona	1	18,301 ha	1,323,883 ha
Remaining Ecosystems	143	236,973 ha	1,432,315 ha
Bosque Pantanoso de la Llanura Aluvial del Oeste de la Amazona	11	16,766 ha	74,296 ha
Bosque inundable de la llanura aluvial de rios de aguas negras del oeste de la Amazona	19	39,231 ha	275,115 ha
Bosque del Piedemonte del Oeste de la Amazona	6	16,485 ha	138,338 ha
Bosque Siempreverde Subandino del Oeste de la Amazona	15	3,088 ha	11,070 ha
Bosque inundable de la llanura aluvial de rios de aguas blancas de oeste de la Amazona	3	2,068 ha	5,109 ha
Bosques y palmares yunguenos pluviales basimontanos	42	15,094 ha	56,914 ha
Complejo de bosques sucesionales inundables de aguas blancas de la Amazona	6	11,404 ha	82,693 ha
Bosque de la planicie sedimentaria del oeste de la Amazona	10	36,172 ha	421,788 ha
Complejo de vegetacion sucesional ripario de aguas blancas de la Amazona	6	1,254 ha	2,136 ha
Herbazal pantanoso de la llanura aluvial del oeste de la Amazona	4	1,917 ha	2,023 ha
Bosque pantanoso de palmas de la llanura aluvial de la Amazona	18	93,445 ha	362,807 ha
Palmar pantanoso de la Cordillera Azul	1	10.5 ha	10.5 ha



Integration of New Data Sets and Functionality

Data: Deforestation Events



Explore • Create • Share • Learn



Search Data Basin

My Workspace

Datasets

Maps

Galleries

People

Groups

Admin

Welcome Dennis Grossman



New Map

2 datasets

Tasks

View

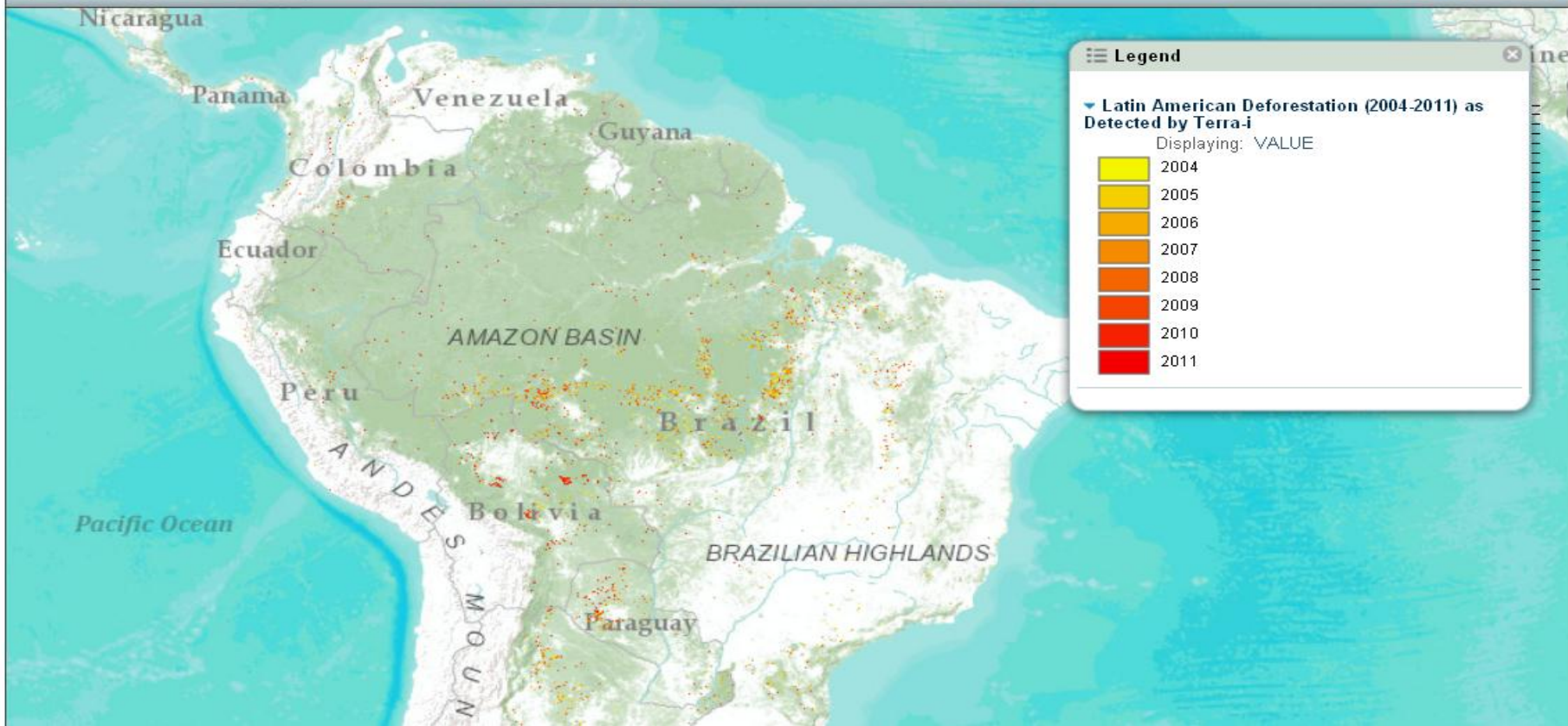
Help



Identify



Full Screen



Data: Carbon Stock



Explore • Create • Share • Learn



Search Data Basin

My Workspace

Datasets

Maps

Galleries

People

Groups

Admin

Welcome Dennis Grossman



New Map



2 datasets

Tasks ▼

View ▼

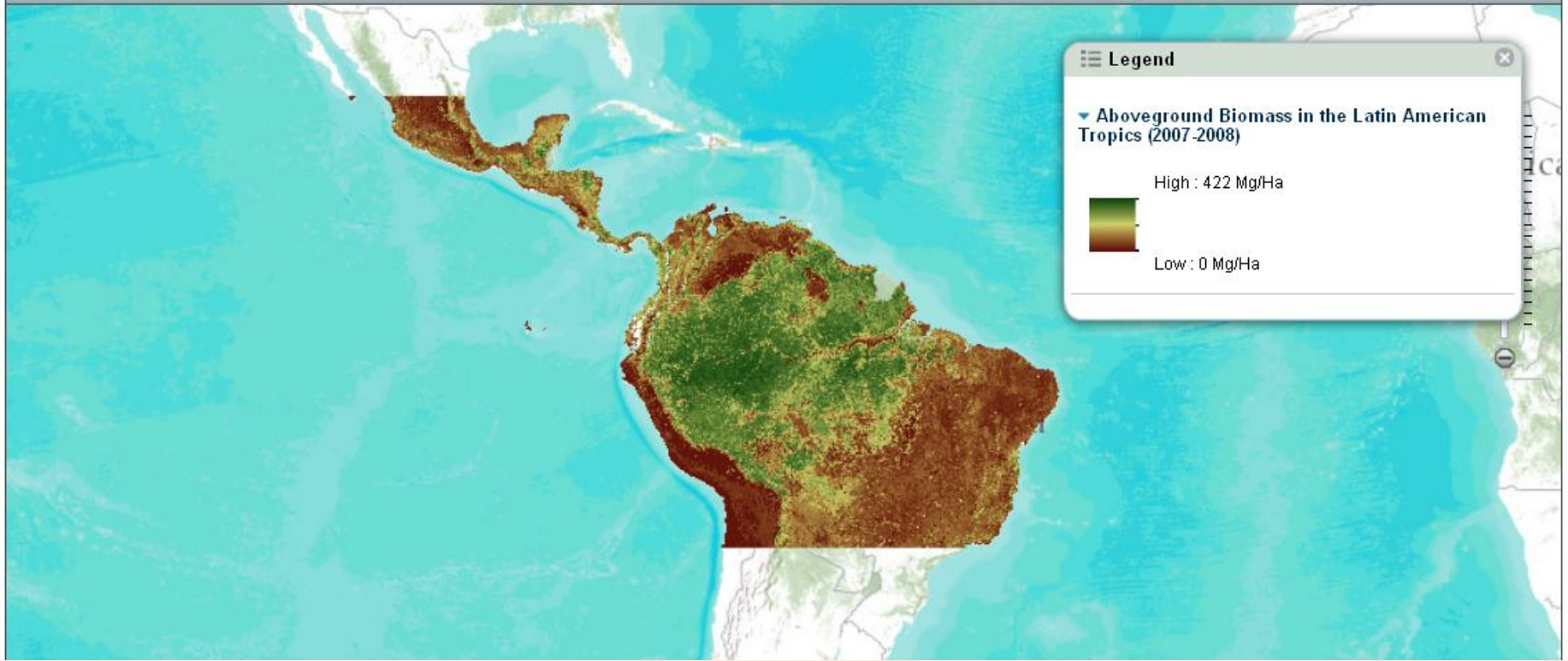
Help ▼



Identify



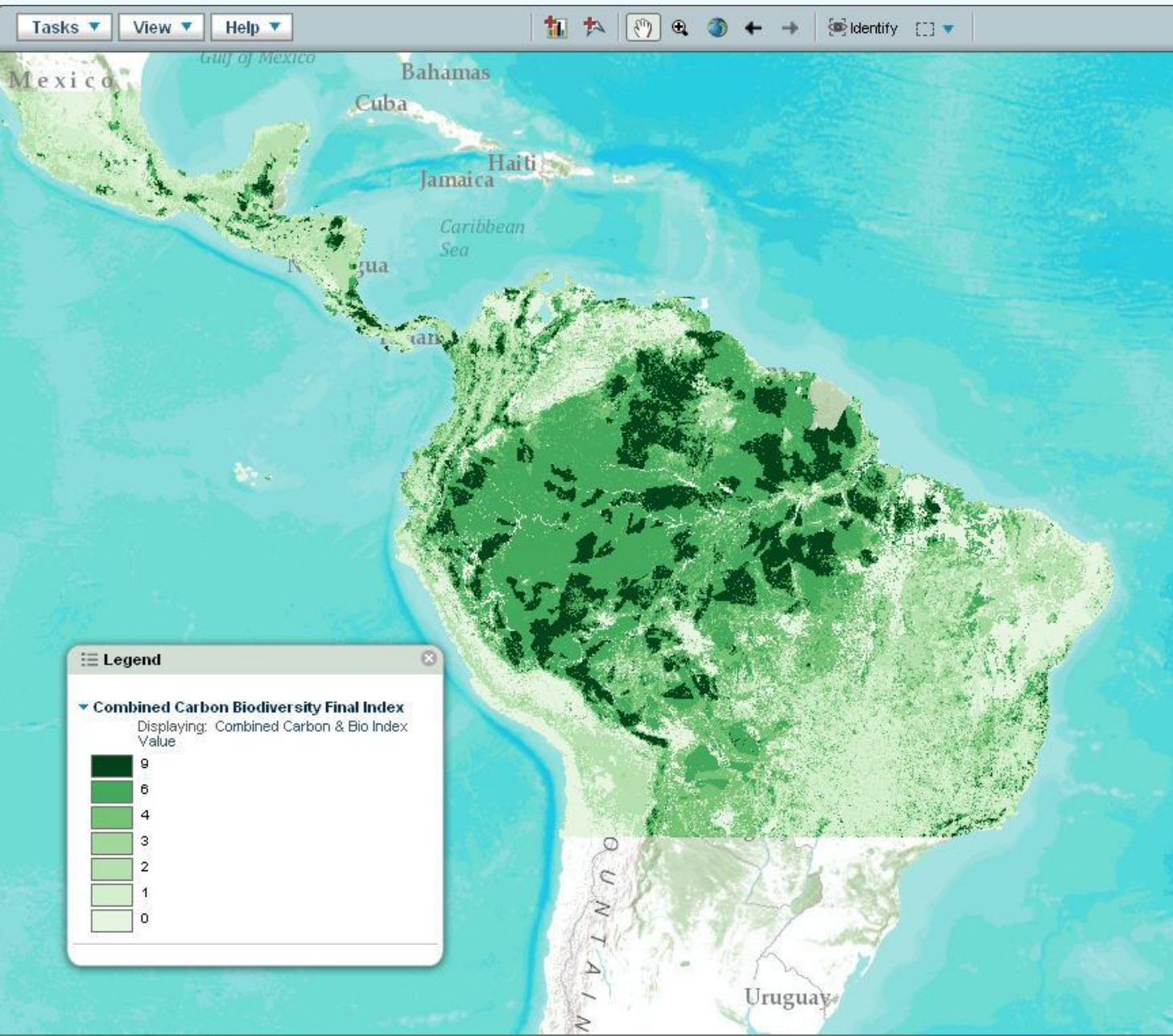
Full Screen



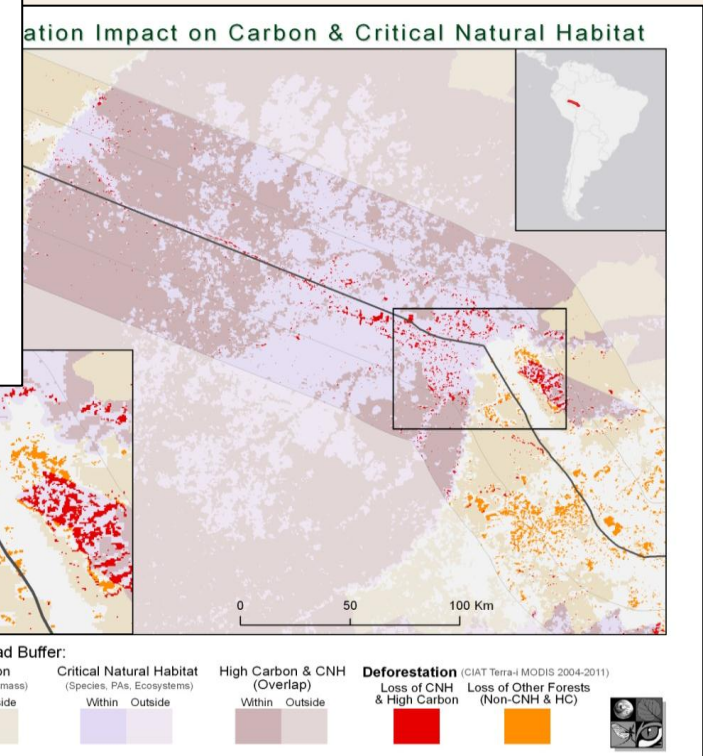
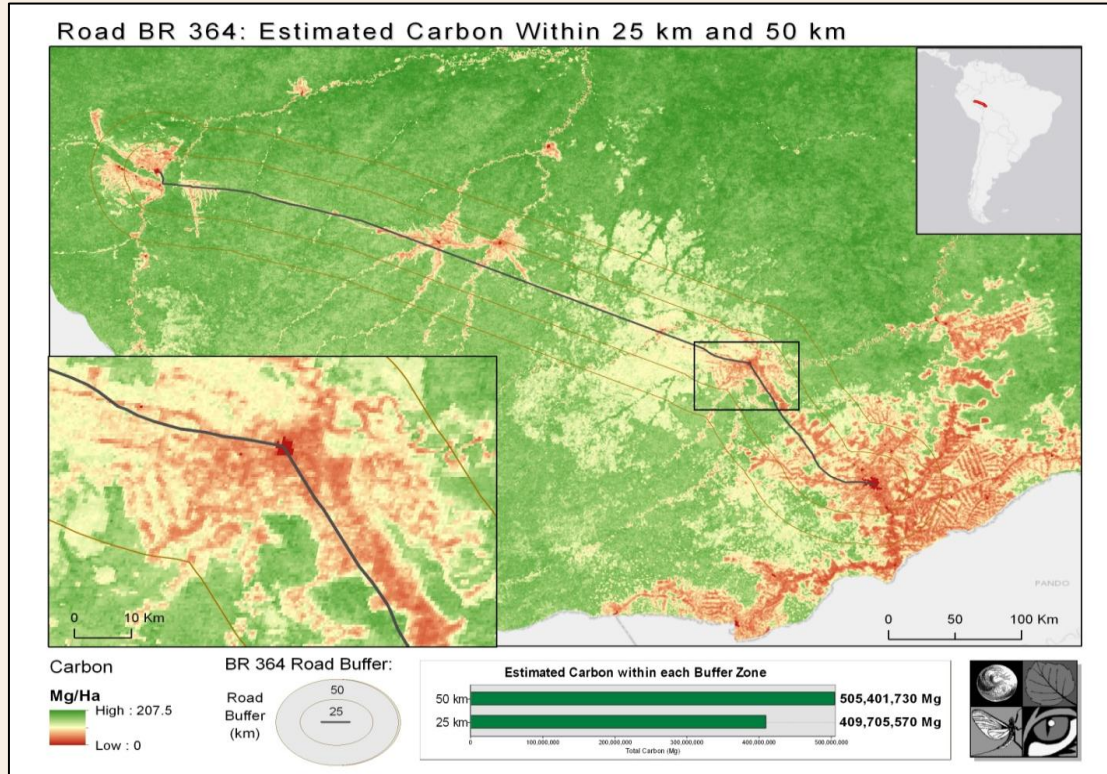
Interface between Carbon and Conservation Values



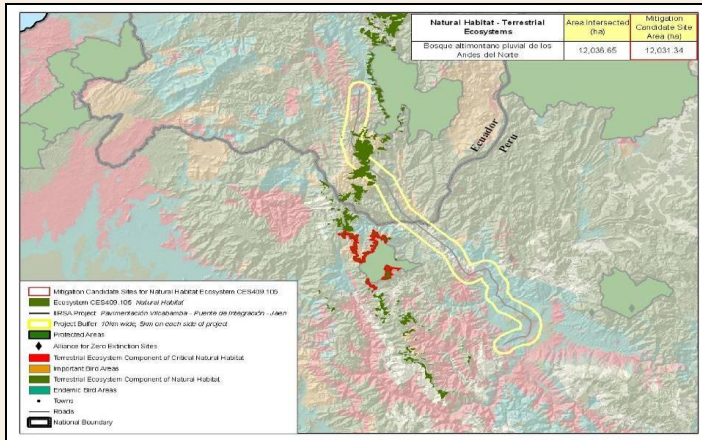
Carbon-Conservation value interface



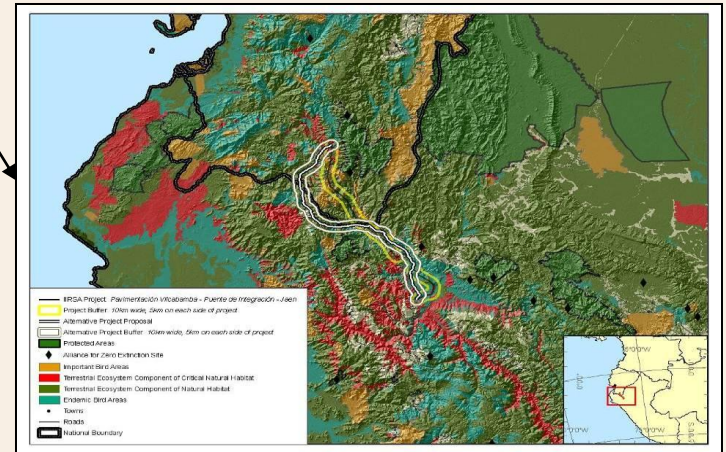
Potential Road Impacts to Carbon and Biodiversity



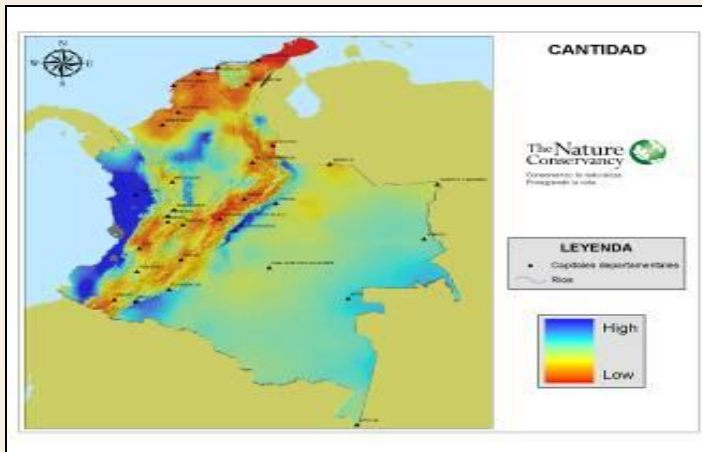
Support for Advanced Spatial Analyses



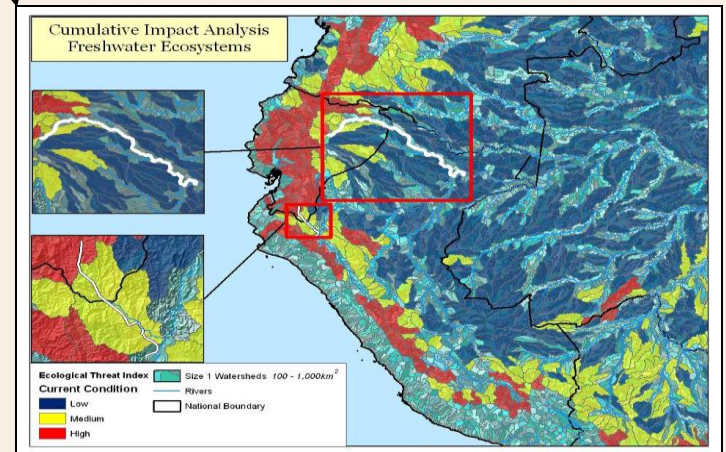
Offset and Mitigation Analysis



Alternative Scenario Evaluation



Ecosystem Services Valuation



Cumulative Impact Assessment

Poster presented at

IAIA Porto Conference



Inter-American Development Bank
Decision Support Platform
for Project Environmental Assessments



SUPPORT FOR INFRASTRUCTURE DEVELOPMENT PLANNING

- Early warning system to alert project developers if implementation plans could result in significant impacts to recognized sites of conservation interest

- Project evaluation system to support project environmental review by planning agencies and environmental impact specialists



- Ability to draw projects, create zones of direct and indirect impact, and generate custom impact reports that identify specific areas of environmental concern

LATIN AMERICA CONSERVATION DATABASE

- Most comprehensive compilation of conservation planning data for Latin America
- Developed through Partnership with Conservation International, BirdLife International, The Nature Conservancy, UNEP World Conservation Monitoring Centre, NatureServe and the Conservation Biology Institute
- Data sharing approach with GBIF, IABIN and GeoSUR
- Critical Information on Protected Areas, Species of Concern and Ecosystems of Concern

DATA BASIN BASICS

- Cutting edge web-based technology
- Supports upload, download and sharing of spatial conservation information
- Facilitates generation of maps and spatial analysis
- Currently populated with over 6000 public global conservation datasets
- Ability to upload and download datasets and maps
- Ability to make customized maps within the system
- Over 4,000 people are currently registered users of the system
- Over 200 working groups are using the platform for their work

STEP 1

Identify Project site and Area of Influence



STEP 2

Select Sites of Environmental and Social Significance in the Project Area of Influence



STEP 3

Analyse and Report Potential Project Impacts to Identified Areas of Environmental and Social Significance



www.databasin.org

For more
information
contact:



Dennis Grossman, Ph.D.
Conservation Biology Institute
Phone: 571-236-2651
Email: denny@conbio.org
Website: www.conbio.org



Alberto Vilalba
InterAmerican Development Bank
Phone: 202 623-1520
Email: avilalba@idb.org
www.idb.org

Contacts:

Dennis Grossman

Conservation Biology Institute

denny@consbio.org

Heidi Hausman

InterAmerican Development Bank

hhausman@iadb.org